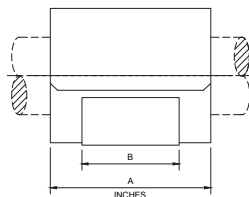
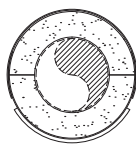
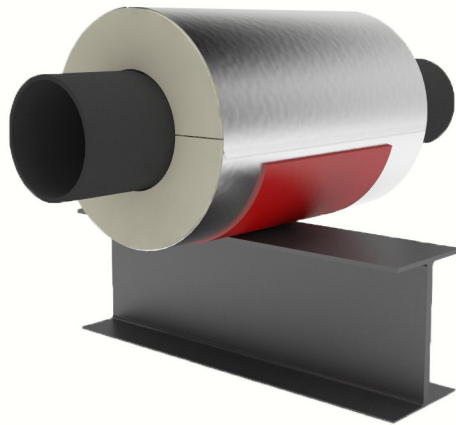


Model A7200 Insulated Pipe Support

Heavy Duty with
load bearing plate



Pipe Size	MAXIMUM LOAD RTG. (LBS)	A	B	C
	On Flat Surface (a)			
6	1000	9	6	1/2
8	1250	9	6	1/2
10	1550	9	6	5/8
12	2250	9	6	5/8
14	2780	9	6	5/8
16	3300	9	6	3/4
18	3600	9	6	3/4
20	3800	9	6	3/4
24	4100	9	6	1
30	4500	9	6	1
36	4500	9	6	1
42	4500	9	6	1

TABLE I

Contact factory for other dimensions, temperatures, and loads. Available in all insulation thicknesses.

Note: For higher load ratings, see A7400, B1100

The load ratings represent average values obtained in accordance with accepted test methods and are subject to normal manufacturing variations. Dimensions and ratings are subject to change without notice. Contact factory for current information.

a) To develop maximum load rating, width of support surface should be at least 1/2 of dimension "B" in Table I.

Application:

Model A7200 is designed for use on:

- Hot water
- Cold water
- Chilled water
- Dual temperature
- Steam
- Air
- Gas
- Vacuum

Intended for installation on:

- Flat surfaces
- Pipe rolls, see A8200
- Clevis hangers, see A9000

Temperature Range:

Standard: +40°F to +1200°F CalSil Insulation

Note: Up to 1800°F available upon request.

Cryogenic: -275°F to +275°F Urethane Insulation.

Add U after the model number (i.e., A7200U)

Features:

- Compact
- Easy installation
- Eliminates welding to pipe
- Copper tubing sizes available
- Minimizes heat-loss and/or condensation
- Insulating structural inserts for load transfer
- Overlapping galvanized sheet metal jacket
- Load distribution plate integral with bottom jacket
- Other I.D.'s and/or O.D.'s available on request

Performance test results on file:

Available upon request

Material Data:

- **A7200:** Applicable PSI spec. doc.: No. 205
- **Insulation:** Calcium silicate asbestos-free, treated with water repellant
- **Jackets:** Galvanized steel ASTM A-653
- **Structural Inserts:** High-density calcium silicate asbestos-free, treated with water repellant
- **Load distribution Plate:** Carbon steel ASTM A-36
- **Coating:** Primer coated or hot-dip galvanized
Other coatings available upon request
- **Glue:** Industrial contact adhesive

Formal Submittal Sheets available