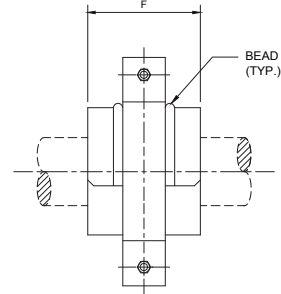
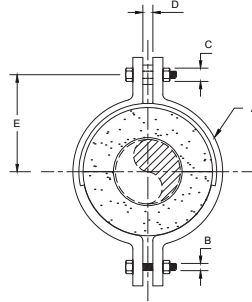
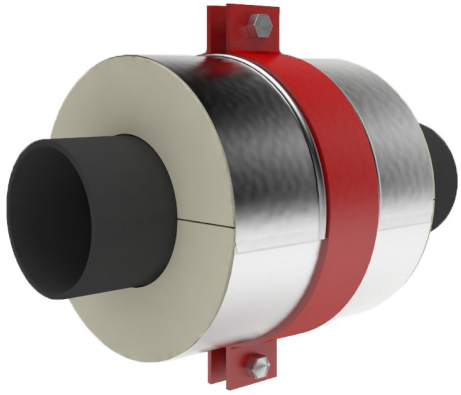


Model D3100 Insulated 2-Bolt Hanger



The load ratings represent average values obtained in accordance with accepted test methods and are subject to normal manufacturing variations. Dimensions and ratings are subject to change without notice. Available in all insulation thickness.

Contact factory for current information.

Note: For higher load ratings, see: D3200.

Pipe Size	Vert load lbs.	A	B	C	D	Insul. Thk. 1"		Insul. Thk. 2"		Insul. Thk. 3"		Insul. Thk. 4"		Insul. Thk. 5"	
						E	F	E	F	E	F	E	F	E	F
						1	510	3/16x3	0.375	0.675	0.75	2.81	6	3.84	6
1 1/2	605	1/4x3	0.375	0.675	0.75	3.19	6	4.5	6	5.5	6	6.56	6	7.56	6
2	605	1/4x3	0.375	0.675	0.75	3.44	6	4.5	6	5.5	6	6.56	6	7.56	6
2 1/2	810	1/4x3	0.5	0.84	0.75	3.81	6	5.13	6	6.13	6	7.19	6	8.31	6
3	1125	3/8x3	0.5	0.84	0.75	4.34	6	5.38	6	6.38	6	7.44	6	8.56	6
4	1720	3/8x3	0.625	1.05	0.75	5	6	6	6	7.06	6	8.06	6	9.19	6
5	2340	1/2x3	0.75	1.05	0.75	5.88	6	6.88	6	7.94	6	9.06	6	10.06	6
6	2705	1/2x3	0.75	1.05	0.75	6.38	6	7.44	6	8.44	6	9.56	6	10.56	6
8	3605	5/8x3	0.875	1.315	1	7.69	6	8.69	6	9.81	6	10.81	6	11.81	6
10	3630	5/8x3	0.875	1.315	1	8.69	6	9.81	6	10.81	6	11.81	6	12.81	6
12	4660	3/4x3	1	1.315	1	10.19	6	11.19	6	12.19	6	13.19	6	14.19	6
14	4660	3/4x3	1	1.315	1	10.69	6	11.69	6	12.69	6	13.69	6	14.69	6
16	6820	3/4x5	1.25	1.66	1.25	11.94	9	12.94	9	13.94	9	14.94	9	15.94	9
18	6820	3/4x5	1.25	1.66	1.25	12.94	9	13.94	9	14.94	9	15.94	9	16.94	9
20	7970	1x6	1.25	1.66	1.25	14.44	9	15.44	9	16.44	9	17.44	9	18.44	9
24	10285	1x6	1.5	1.9	1.25	16.69	9	17.69	9	18.69	9	19.69	9	20.69	9
30	10600	1x6	1.5	1.9	1.25	19.69	9	20.69	9	21.69	9	22.69	9	23.69	9
36	13020	1 1/4x6	2	2.375	1.75	23.69	9	24.69	9	25.69	9	26.69	9	27.69	9
42	13020	1 1/4x6	2	2.375	1.75	26.69	9	27.69	9	28.69	9	29.69	9	30.69	9

TABLE I

Application:

D3100 is designed for use on:

- Hot Water
- Cold Water
- Chilled Water
- Dual Temperature
- Steam
- Air
- Gas
- Vacuum

Intended to be hung from threaded rod

Temperature Range:

Standard: +40°F to +1200°F CalSil Insulation

Note: Up to 1800°F available upon request.

Cryogenic: -275°F to +275°F Urethane Insulation.

Add U after the model number (i.e., D3100U)

Features:

- Compact
- Easy installation
- Eliminates welding to pipe
- Copper tubing sizes and pipe sizes
- Overlapping galvanized sheet metal jacket
- Minimizes heat-loss and/or condensation
- Other I.D.'s and/or O.D.'s available on request

Performance test results on file:
Available upon request.

Material Data:

- **D3100:** Applicable PSI specification document: No. 209
 - **Insulation:** Calcium silicate asbestos-free, treated with water repellent
 - **Jackets:** Galvanized steel ASTM A-653
 - **Glue:** Industrial contact adhesive
 - **Structural Inserts:** High-density calcium silicate asbestos free, treated with water repellent
 - **Steel Straps:** Carbon steel ASTM A-36
 - **Fasteners:** ASTM A-307 plated
 - **Coating:** Primer coated or hot dipped galvanized
Other coatings available upon request
- Formal submittal sheets available**