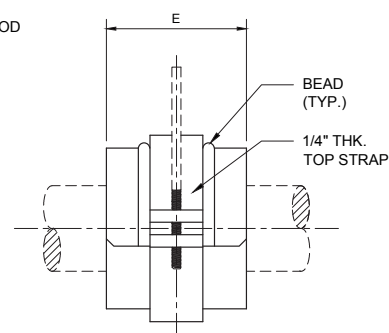
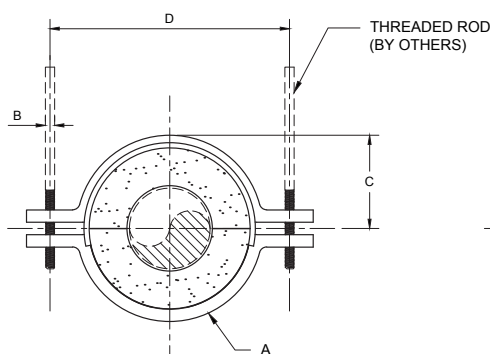
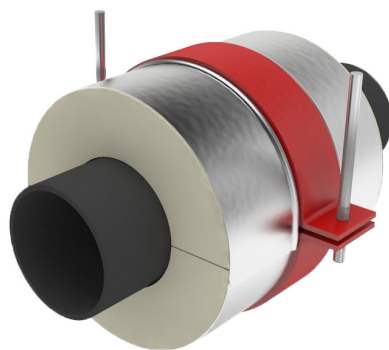


Model D6300 Insulated 2-Rod Hanger



The load ratings represent average values obtained in accordance with accepted test methods and are subject to normal manufacturing variations. Dimensions and ratings are subject to change without notice. Available in all insulation thickness.

Contact factory for current information.

Note: For higher load ratings contact factory.

Pipe Size	Vert load lbs.	Bolt Torq ft-lbs	A	B	Insul. Thk. 1"			Insul. Thk. 2"			Insul. Thk. 3"			Insul. Thk. 4"		
					C	D	E	C	D	E	C	D	E	C	D	E
20	8200	50	1x6	1.25	11.31	28.875	9	12.31	30.875	9	13.31	32.875	9	14.31	34.875	12
24	11400	50	1x6	1.50	13.31	33.375	9	14.31	35.375	12	15.31	37.375	12	16.31	39.375	12
30	11400	50	1x6	1.50	16.31	39.375	12	17.31	41.375	12	18.31	43.375	12	19.31	45.375	12

TABLE I

Application:

D6300 is designed for use on:

- Hot water
- Cold water
- Chilled water
- Dual temperature
- Steam
- Air
- Gas
- Vacuum

Intended to be hung from two threaded rods in close overhead clearance conditions.

Temperature Range:

Standard: +40°F to +1200°F CalSil Insulation

Note: Up to 1800°F available upon request.

Cryogenic: -275°F to +275°F Urethane Insulation. Add U after the model number (i.e., D6300U)

Features:

- Compact
- Easy installation
- Eliminates welding to pipe
- Copper tubing sizes and pipe sizes
- Overlapping galvanized sheet metal jacket
- Minimizes heat-loss and/or condensation
- Minimal overhead clearance requirement
- Other I.D.'s and/or O.D.'s available on request

Performance test results on file:

Available upon request.

Material Data:

- **D6300:** Applicable PSI specification document: No. 209.
- **Insulation:** Calcium silicate asbestos-free, treated with water repellent.
- **Jackets:** Galvanized steel ASTM A-653.
- **Glue:** Industrial contact adhesive
- **Structural Inserts:** High-density calcium silicate asbestos free, treated with water repellent.
- **Steel Straps:** Carbon steel ASTM A-36.
- **Fasteners:** ASTM A-307 plated.
- **Coating:** Primer coated or hot dipped galvanized. Other coatings available upon request

Formal submittal sheets available